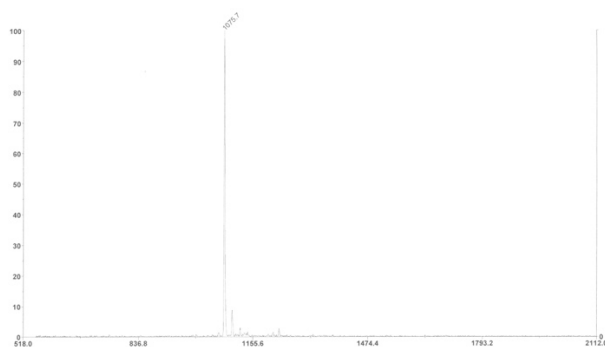


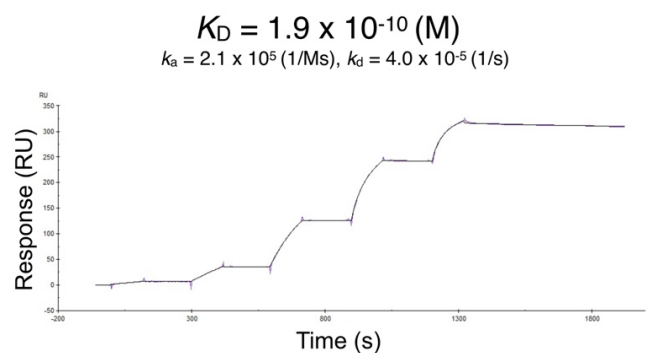
## Epitope peptide of human IL-18 neoepitope mAb R-I-002

<b>Category</b>	protein and peptide
<b>Catalog No.</b>	P-I-003
<b>Product information</b>	
<b>Sequence</b>	[H]-Y-F-G-K-L-E-S-K-C-[OH] human IL-18 <sup>37-44</sup> with an additional C-terminal Cys
<b>UniProt ID</b>	Q14116
<b>Synonyms</b>	IGIF, IL1F4
<b>Gene ID</b>	3606
<b>Lot No.</b>	001
<b>Size</b>	1 mg
<b>Condition</b>	a lyophilized powder
<b>Purity</b>	>95%, by MS analysis
<b>Storage</b>	Store at room temperature in a desiccator upon receipt. Storage in buffer is NOT recommended. For up to one week, you can store peptides in solution at 4°C. For short term storage (up to one months), solubilize in buffer and aliquot, then store frozen at -20°C to avoid freeze-thaw cycles. For long term storage -80°C is recommended.

### Mass spectrometry



### Surface Plasmon Resonance analysis



## Background

This gene encodes a member of the interleukin-1 (IL-1) family of cytokines. In addition to its role in the inflammatory response to microbes, recent studies implicate IL-18 as an important factor in human autoimmune, autoinflammatory, allergic, neurological and metabolic diseases. Similar to IL-1 $\beta$ , pro-IL-18 is processed by inflammatory caspase-1 or caspase-4 to yield mature, active form (IL-18<sup>37-193</sup>).

## References for IL-18 epitope peptide of R-I-001 (P-I-002)

PMID:	30615852	Journal:	Archives of Biochemistry and Biophysics
		IF (2017):	3.118
Title:	Generation and characterization of antagonistic anti-human interleukin (IL)-18 monoclonal antibodies with high affinity: Two types of monoclonal antibodies against full-length IL-18 and the neopeptide of the inflammatory caspase-cleaved active IL-18		